

APPALACHIAN STATE



Dr. Kenneth Peacock
Chancellor



Charlie Cobb
Director of Athletics



Dr. Alan Hauser
Faculty Athletics Rep.



Debbie Richardson
Senior Woman Admin.



Ty Patton
Men's Basketball SID

2008-09 Mountaineers Roster

No.	Name	Pos.	Ht.	Wt.	Class	Hometown/Last School
0	Donald Sims	G	6-1	170	So.	Gaffney, S.C./Fork Union Military Aca.
1	Ryann Abraham	G	5-10	180	Jr.	Mayaguez, Puerto Rico/Starmount
3	Quinche Dowdell	F	6-5	230	Fr.	Oak Ridge, Tenn./Oak Ridge
4	Donterious Hughes	G	6-2	195	R-Fr.	Gastonia, N.C./Hunter Huss
12	J.R. Archer	G	6-3	195	So.	Boone, N.C./Watauga
15	Jeremi Booth	G	6-5	205	So.	Altavista, Va./Fork Union
21	Eduardo Bermudez	G	6-3	190	Sr.	Bayamon, Puerto Rico/Colegio Carmen Sol
23	Kellen Brand	G	6-1	185	Jr.	High Point, N.C./Andrews
24	Marcus Wright	G	6-1	185	Fr.	Winston-Salem, N.C./Winston-Salem Prep
25	Josh Hunter	F	6-6	235	Jr.	Albany, Ga./Okaloosa-Walton JC
31	A.J. Highsmith	G	6-4	200	Jr.	Winston-Salem, N.C./Reynolds
32	Isaac Butts	C	6-10	285	So.	Milledgeville, Ga./Georgia Military College
33	Tyler Webb	F	6-9	230	R-Jr.	Nickelsville, Fla./Twin Springs
34	Josh Nirenberg	C	6-9	260	Fr.	Ft. Lauderdale, Fla./Cardinal Gibbons
50	Andre Williamson	F	6-7	215	Fr.	Prince George, Va./Prince George

Quick Facts

Location: Boone, N.C.
 Founded: 1899
 Enrollment: 16,600
 Nickname: Mountaineers
 Colors: Black and Gold
 Chancellor: Dr. Kenneth Peacock
 Athletics Director: Charlie Cobb
 Home Court (Capacity): Holmes Center (8,325)
 Press Row Phone: (828) 262-7060

Basketball Facts

2007-08 Record: 18-13
 Conference Record (Place): 13-7 (1st-tie, North)
 Home: 9-4
 Away: 7-7
 Neutral: 2-2
 Letterwinners Returning/Lost: 9/5
 Starters Returning/Lost: 3/2

Media Relations

Director: Mike Flynn
 E-mail: flynnmh@appstate.edu
 Office: (828) 262-7162
 Basketball Contact: Ty Patton
 E-mail: pattons@appstate.edu
 Office: (828) 262-7162
 Fax: (828) 262-6106
 Website: www.goasu.com

Primary Media

Winston-Salem Journal (336-727-7211)
 Tommy Bowman (jb Bowman@wsjournal.com)

Watauga Democrat (828-264-3612)
 Steve Behr (sports@wataugademocrat.com)

Charlotte Observer (704-358-5125)
 Harry Pickett (hpickett@charlotteobserver.com)

WXII-TV (336-721-9944)
 Dave Goren (dgoren@hearst.com)

WBTV-TV (704-374-3500)
 Delano Little (dlittle@wbvtv.com)

WCNC-TV (704-329-3666)
 Greg Bailey (gbailey@wcnc.com)

MTN
 Bill Fisher (fish@mtntv.com)

Radio Play-by-Play (828-262-2018)
 David Jackson (jacksondm@appstate.edu)

2008-09 Schedule

Date	Opponent	Time
Nov. 14	at UNC Wilmington	7 p.m.
Nov. 19	CHARLOTTE	7 p.m.
Nov. 22	at Niagara	4 p.m.
Nov. 29	CAMPBELL	3 p.m.
Dec. 3	at Furman*	7 p.m.
Dec. 6	at Wofford*	7 p.m.
Dec. 13	EAST TENNESSEE STATE	7 p.m.
Dec. 20	vs. Kentucky! (FSNS)	12 p.m.
Dec. 30	MILLIGAN	7 p.m.
Jan. 2	at Texas (ESPNU)	9 p.m.
Jan. 8	ELON*	7 p.m.
Jan. 10	UNC GREENSBORO*	3:30 p.m.
Jan. 12	DAVIDSON*	7:30 p.m.
Jan. 15	at Chattanooga*	7 p.m.
Jan. 17	at Samford*	3 p.m.
Jan. 21	at College of Charleston*	7 p.m.
Jan. 24	WESTERN CAROLINA* (SPSO)	5 p.m.
Jan. 29	WOFFORD*	7 p.m.
Jan. 31	FURMAN*	3:30 p.m.
Feb. 2	at Georgia Southern*	7:30 p.m.
Feb. 5	THE CITADEL*	7 p.m.
Feb. 7	at Elon* (SPSO)	4:30 p.m.
Feb. 12	at The Citadel*	7 p.m.
Feb. 14	at Western Carolina*	7 p.m.
Feb. 16	COLLEGE OF CHARLESTON* (CSS)	7:30 p.m.
Feb. 19	at UNC Greensboro*	7 p.m.
Feb. 21	at ESPN Bracketbusters	TBA
Feb. 26	CHATTANOOGA*	7 p.m.
Feb. 28	SAMFORD*	3:30 p.m.
Mar. 6-9	at SoCon Tournament	TBA
	(at Chattanooga, Tenn.)	

*Southern Conference game

All Times Eastern

! at Freedom Hall, Louisville, Ky.



MOUNTAINEERS

INTRODUCTION



SOUTHERN CONFERENCE

Holmes Convocation Center

Arena: Holmes Convocation Center

Capacity: 8,325

Date Opened: November 17, 2000

First Game: No. 7 North Carolina 99, Appalachian State 69 (Nov. 17, 2000) (8,325)

First ASU Win: Appalachian State 86, Robert Morris 71 (Nov. 20, 2000) (1,827)

All-Time Holmes Center Record: 55-35 (.611)

Largest Crowd: 8,325 vs. North Carolina (Nov. 17, 2000)

Largest Average Attendance: 2,572 in 2000-01 (36,007 in 14 games)

TEAM PROFILES

Houston Fancher Head Coach



Hometown: Newport, Tenn.

Birth date: February 17, 1966

Education: B.S., Middle Tennessee State, 1988
M.S., Lincoln Memorial, 1990

Coaching: Student Ass't., Middle Tennessee, 1984-88
Assistant, Maryville, 1988-92
Head coach, North Greenville, 1992-95
Assistant, Vanderbilt, 1995-96
Assistant, Appalachian State, 1996-98
Assoc. Head Coach, Appalachian St., 1998-00
Head Coach, Appalachian St., 2000-present

2007-08 REVIEW

Year-by-Year Record

Year	School	Record	SoCon
1992-93	North Greenville	14-14	-
1993-94	North Greenville	15-13	-
1994-95	North Greenville	15-14	-
2000-01	Appalachian State	11-20	7-9
2001-02	Appalachian State	10-18	5-11
2002-03	Appalachian State	19-10	11-5
2003-04	Appalachian State	9-21	4-12
2004-05	Appalachian State	18-12	9-7
2005-06	Appalachian State	14-16	6-8
2006-07	Appalachian State	25-8	15-3
2007-08	Appalachian State	18-13	13-7
North Greenville		44-41	-
Appalachian State		124-118	70-62
Career		168-159	70-62

RECORDS

HISTORY

POSTSEASON

COACHING STAFF

Associate Coach: Matt McMahon (Appalachian State, 2000)
Assistant Coach: Richard Morgan (Virginia, 1989)
Assistant Coach: Josh Ealy (Tusculum, 2007)

Players to Watch

Kellen Brand G, Jr., 6-1, 185 High Point, N.C./Andrews

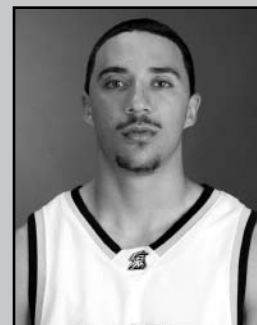


Kellen Brand built upon a solid freshman campaign and increased his production during 2007-08. After scoring 6.2 points in 2006-07, Brand averaged 10.4 points per contest as a sophomore and ranked 27th in the SoCon in points per game. He scored in double figures in 16 of 32 games, including a season-high 27 points at Charlotte. Brand led the Mountaineers in scoring seven times last season and knocked down 34 percent of his three-point field goals in league play.

Brand's Career Stats

Year	GP-GS	REB-AVG	A	TO	BK	ST	PTS	AVG
2006-07	32-2	55-1.7	21	38	0	18	198	6.2
2007-08	31-30	81-2.6	42	45	1	20	323	10.4
Totals	63-32	136-2.2	63	83	1	38	521	8.3

Donald Sims G, So., 6-1, 170 Gaffney, S.C./Fork Union



Donald Sims made an immediate impact for the Mountaineers in 2007-08. A SoCon All-Freshman honoree, Sims averaged 11.5 points per game, 19th in the Southern Conference and fifth best among league freshman. Sims also ranked second in the league in free throw percentage (.879), sixth in three-point field goal percentage (.435), ninth in made three-point field goals per game (2.16) and 14th in assists per game (2.6). He led the Mountaineers with 80 assists and handed out a season-high nine helpers against East Tennessee State. Sims scored in double figures 15 times during his freshman season and started 17 of ASU's 31 contests. He made six three pointers in two different games.

Sims' Career Stats

Year	GP-GS	REB-AVG	A	TO	BLK	ST	PTS	AVG
2007-08	31-17	56-1.8	80	47	5	28	355	11.5
Totals	31-17	56-1.8	80	47	5	28	355	11.5

All-Time Appalachian State Coaches

Coach	Seasons	Years	W	L	Pct.
Eugene Garbee	1934-35	1	8	11	.421
Flucie Stewart	1935-40, 1946-47	6	67	38	.638
Clyde Canipe	1940-42	2	38	7	.844
Belus Smawley	1942-43	1	16	5	.762
Harold Quincy	1943-44	1	0	7	.000
G.P. Eggers	1944-45	1	6	13	.316
Francis Hoover	1945-46, 1947-57	11	133	127	.512
Bob Light	1957-72	15	212	178	.544
Press Maravich	1972-75	3	14	63	.182
Bobby Cremins	1975-81	6	100	70	.588
Kevin Cantwell	1981-86	5	61	78	.439
Tom Apke	1986-96	10	139	147	.486
Buzz Peterson	1996-00	4	79	39	.669
Houston Fancher	2000-present	8	124	118	.512

APPALACHIAN STATE

2007-08 Results (18-13, 13-7)

Date	Opponent	Result	Score	Attendance	Leading Scorer	Leading Rebounder
Nov. 12	at Charlotte	L	78-84	7065	(27) Kellen Brand	(6) Donte Minter
Nov. 15	vs Lipscomb #	W	81-58	-	(20) Donald Sims	(10) Jeremy Clayton
Nov. 16	vs San Jose State #	L	62-64		(18) Kellen Brand	(9) Jeremy Clayton
Nov. 17	at Middle Tennessee St	W	84-79	3605	(15) Jeremy Clayton	(9) Donte Minter
Nov. 21	at Campbell	W	71-64	947	(14) Ryann Abraham	(6) Jeremy Clayton
Nov. 26	DAVIDSON	L	60-71	3248	(19) Ryann Abraham	(9) McLaughlin-Williams
Nov. 29	WICHITA STATE	L	53-62	2564	(16) Donte Minter	(6) Donte Minter
Dec. 1	at Georgia Southern	L	72-85	2570	(19) Donte Minter	(7) Jeremy Clayton
Dec. 17	VIRGINIA-WISE	W	82-77	1129	(17) Kellen Brand	(7) Isaac Butts
Dec. 22	vs Arkansas \$	W	74-67	10835	(24) Donald Sims	(14) Jeremy Clayton
Dec. 30	at East Tennessee State	L	69-72	5017	(13) Donald Sims	(9) Donte Minter
Jan. 3	at College of Charleston	W	70-66	3127	(19) Donte Minter	(7) Jeremy Clayton
Jan. 5	at The Citadel	W	63-50	915	(13) Ryann Abraham	(11) Donte Minter
Jan. 10	at Wofford	W	52-49	1324	(12) Kellen Brand	(13) Donte Minter
Jan. 12	UNC GREENSBORO	W	91-68	1954	(16) Jeremi Booth	(7) Jeremy Clayton
Jan. 17	CHATTANOOGA	W	92-83	2574	(28) Donald Sims	(13) Jeremy Clayton
Jan. 19	GEORGIA SOUTHERN	W	88-81	3743	(20) Kellen Brand	(10) Davis Bowne
Jan. 24	at Furman	W	84-66	1086	(21) Jeremy Clayton	(13) Donte Minter
Jan. 26	at Chattanooga	L	77-89	4464	(23) Donald Sims	(11) Jeremy Clayton
Jan. 28	ELON	W	56-52	2359	(17) Kellen Brand	(8) Donte Minter
Feb. 2	at Western Carolina	W	69-64	2487	(13) Donte Minter	(17) Jeremy Clayton
Feb. 7	COLLEGE OF CHARLESTON	L	63-68	2692	(13) Donald Sims	(5) Jeremi Booth
Feb. 9	THE CITADEL	W (OT)	75-71	2689	(17) Donte Minter	(11) Jeremy Clayton
Feb. 11	WOFFORD	W	83-55	1701	(25) Donte Minter	(16) Jeremy Clayton
Feb. 14	at Elon	L	70-76	1023	(24) Donte Minter	(7) Jeremy Clayton
Feb. 16	at UNC Greensboro	L	55-79	1831	(20) Donte Minter	(11) Jeremy Clayton
Feb. 21	FURMAN	W	90-77	1302	(12) Donte Minter	(6) Jeremy Clayton
Feb. 23	NIAGARA	L	75-76	2103	(15) Donte Minter	(13) Jeremy Clayton
Feb. 27	at Davidson	L	55-68	5838	(18) Ryann Abraham	(12) Jeremy Clayton
March 1	WESTERN CAROLINA	W	74-63	3732	(19) Donte Minter	(8) Donte Minter
March 8	vs UNC Greensboro (SC)	L	46-63	4289	(18) Kellen Brand	(13) Jeremy Clayton

- Murfreesboro, Tenn.

\$ - N. Little Rock, Ark.

(SC) - Southern Conference Tournament in Charleston, S.C.

2007-08 Statistics

Overall Statistics

Player	GP-GS	Min.-Avg.	FGM-FGA	Pct.	3FGM-FGA	Pct.	FTM-FTA	Pct.	R-Off.	R-Def.	Rebs.	Avg.	PF	FO	A	TO	Blk.	Stl.	Points	Avg.
Donte Minter	30-29	754-25.1	164-276	.594	0-0	.000	90-123	.732	45	134	179	6.0	79	2	54	55	46	27	418	13.9
Donald Sims	31-17	742-23.9	97-237	.409	67-154	.435	94-107	.879	9	47	56	1.8	45	0	80	47	5	28	355	11.5
Kellen Brand	31-30	887-28.6	108-243	.444	39-104	.375	68-94	.723	25	56	81	2.6	52	1	42	45	1	20	323	10.4
Jeremy Clayton	31-31	909-29.3	108-189	.571	0-5	.000	55-94	.585	72	180	252	8.1	87	3	64	76	75	31	271	8.7
Ryann Abraham	31-13	685-22.1	86-177	.486	45-97	.464	35-50	.700	5	37	42	1.4	70	2	60	65	2	29	252	8.1
Eduardo Bermudez	31-24	687-22.2	70-157	.446	25-68	.368	38-54	.704	34	58	92	3.0	52	1	33	56	3	26	203	6.5
McLaughlin-Williams	29-2	478-16.5	39-99	.394	28-77	.364	12-24	.500	17	52	69	2.4	29	0	24	30	2	14	118	4.1
Jeremi Booth	28-5	332-11.9	37-111	.333	21-76	.276	9-14	.643	11	32	43	1.5	30	0	19	17	0	5	104	3.7
Isaac Butts	20-0	171-8.6	25-47	.532	0-0	.000	7-15	.467	14	43	57	2.9	29	0	9	21	5	2	57	2.9
Davis Bowne	31-3	488-15.7	32-76	.421	0-0	.000	10-26	.385	30	70	100	3.2	48	1	32	36	6	7	74	2.4
A.J. Highsmith	17-0	75-4.4	11-24	.458	6-17	.353	1-3	.333	2	6	8	0.5	5	0	3	4	0	0	29	1.7
Jay McMillan	8-1	12-1.5	2-4	.500	1-3	.333	1-2	.500	2	5	7	0.9	3	0	0	2	0	0	6	0.8
J.R. Archer	6-0	8-1.3	1-4	.250	0-2	.000	2-2	1.000	1	0	1	0.2	3	0	0	1	0	0	4	0.7
TEAM									37	65	102	3.3	0			15				
Total	31		780-1644	.474	232-603	.385	422-608	.694	304	785	1089	35.1	532	10	420	470	145	189	2214	71.4
Opponents	31		771-1850	.417	229-650	.352	376-559	.673	388	669	1057	34.1	574	-	376	384	71	205	2147	69.3

Conference Statistics

Player	GP-GS	Min.-Avg.	FGM-FGA	Pct.	3FGM-FGA	Pct.	FTM-FTA	Pct.	R-Off.	R-Def.	Rebs.	Avg.	PF	FO	A	TO	Blk.	Stl.	Points	Avg.
Donte Minter	19-18	483-25.4	110-170	.647	0-0	.000	73-96	.760	29	91	120	6.3	45	0	28	30	27	19	293	15.4
Donald Sims	20-15	509-25.5	63-165	.382	48-114	.421	64-74	.865	7	30	37	1.9	35	0	55	29	4	18	238	11.9
Kellen Brand	20-19	544-27.2	65-149	.436	22-64	.344	50-66	.758	15	32	47	2.4	32	1	32	28	1	14	202	10.1
Ryann Abraham	20-4	440-22.0	61-124	.492	32-68	.471	15-23	.652	3	23	26	1.3	42	1	41	37	2	20	169	8.5
Jeremy Clayton	20-20	585-29.3	65-119	.546	0-3	.000	35-54	.648	52	117	169	8.5	54	2	51	45	50	21	165	8.3
Eduardo Bermudez	20-14	410-20.5	36-91	.396	19-44	.432	15-25	.600	19	28	47	2.4	29	0	23	31	1	16	106	5.3
Jeremi Booth	20-5	277-13.9	32-93	.344	16-60	.267	9-14	.643	8	29	37	1.9	22	0	15	15	0	4	89	4.5
McLaughlin-Williams	19-1	286-15.1	24-58	.414	15-44	.341	8-13	.615	9	29	38	2.0	18	0	12	12	1	5	71	3.7
Isaac Butts	10-0	82-8.2	12-26	.462	0-0	.000	3-8	.375	9	19	28	2.8	12	0	7	6	4	0	27	2.7
Davis Bowne	20-3	348-17.4	23-55	.418	0-0	.000	6-18	.333	25	46	71	3.6	36	1	18	26	4	5	52	2.6
A.J. Highsmith	11-0	45-4.1	7-15	.467	4-11	.364	1-1	1.000	1	3	4	0.4	3	0	1	2	0	0	19	1.7
J.R. Archer	6-0	8-1.3	1-4	.250	0-2	.000	2-2	1.000	1	0	1	0.2	3	0	0	1	0	0	4	0.7
Jay McMillan	6-1	11-1.8	1-3	.333	1-3	.333	1-2	.500	1	5	6	1.0	3	0	0	2	0	0	4	0.7
TEAM									24	36	60	3.0	0			7				
Total	20		500-1072	.466	157-413	.380	282-396	.712	203	488	691	34.5	334	5	283	271	94	122	1439	71.9
Opponents	20		502-1178	.426	156-429	.364	221-337	.656	244	436	680	34.0	367	-	241	237	50	124	1381	69.1



MOUNTAINEERS

Appalachian State Year-By-Year

Year	Overall	SoCon	Place	Coach
1919-20	0	1		None listed
1925-26	17	5		None listed
1927-28	15	3		None listed
1928-29	12	8		None listed
1929-30	14	5		None listed
1930-31	12	3		None listed
1931-32	10	6		None listed
1932-33	2	0		None listed
1933-34	4	2		None listed
1934-35	8	11		Eugene Garbee
1935-36	5	14		Flucie Stewart
1936-37	10	7		Flucie Stewart
1937-38	11	6		Flucie Stewart
1938-39	11	5		Flucie Stewart
1939-40	19	3		Flucie Stewart
1940-41	22	3		Clyde Canipe
1941-42	16	4		Clyde Canipe
1942-43	16	5		Belus Smawley
1943-44	0	7		Harold Quincy
1944-45	6	13		G.P. Eggers
1945-46	11	8		Frances Hoover
1946-47	11	3		Flucie Stewart
1947-48	17	7		Frances Hoover
1948-49	14	6		Frances Hoover
1949-50	19	7		Frances Hoover
1950-51	16	8		Frances Hoover
1951-52	18	6		Frances Hoover
1952-53	5	18		Frances Hoover
1953-54	4	20		Frances Hoover
1954-55	12	11		Frances Hoover
1955-56	8	13		Frances Hoover
1956-57	4	20		Frances Hoover
1957-58	12	12		Bob Light
1958-59	15	9		Bob Light
1959-60	19	8		Bob Light
1960-61	17	10		Bob Light
1961-62	11	12		Bob Light
1962-63	14	12		Bob Light
1963-64	14	12		Bob Light
1964-65	14	10		Bob Light
1965-66	17	10		Bob Light
1966-67	21	8		Bob Light
1967-68	14	13		Bob Light
1968-69	12	15		Bob Light
1969-70	15	12		Bob Light
1970-71	8	16		Bob Light
1971-72	8	18		Bob Light
1972-73	6	20	3 8	Press Maravich
1973-74	5	20	1 11	Press Maravich
1974-75	3	23	1 11	Press Maravich
1975-76	13	14	6 6	Bobby Cremins
1976-77	17	12	8 4	Bobby Cremins
1977-78	15	13	9 3	Bobby Cremins
1978-79	23	6	11 3	Bobby Cremins
1979-80	12	16	6 10	Bobby Cremins

Year	Overall	SoCon	Place	Coach
1980-81	20	9	11 5	1st, tie Bobby Cremins
1981-82	11	15	6 10	8th Kevin Cantwell
1982-83	6	21	3 13	8th Kevin Cantwell
1983-84	13	16	8 8	4th, tie Kevin Cantwell
1984-85	14	14	7 9	5th, tie Kevin Cantwell
1985-86	17	12	9 7	4th Kevin Cantwell
1986-87	7	21	3 13	8th, tie Tom Apke
1987-88	13	12	8 8	5th, tie Tom Apke
1988-89	20	8	8 6	3rd Tom Apke
1989-90	19	11	8 6	3rd Tom Apke
1990-91	16	14	7 7	4th, tie Tom Apke
1991-92	15	14	9 3	3rd, tie Tom Apke
1992-93	13	15	8 10	6th, tie Tom Apke
1993-94	16	11	12 6	4th Tom Apke
1994-95	9	20	4 10	5th, North Tom Apke
1995-96	8	20	3 11	5th, North Tom Apke
1996-97	14	14	8 6	3rd, North Buzz Peterson
1997-98	21	8	13 2	1st, tie, North Buzz Peterson
1998-99	21	8	13 3	1st, North Buzz Peterson
1999-00	23	9	13 3	1st, North Buzz Peterson
2000-01	11	20	7 9	3rd, North Houston Fancher
2001-02	10	18	5 11	5th, tie, North Houston Fancher
2002-03	19	10	11 5	1st, tie, North Houston Fancher
2003-04	9	21	4 12	6th, North Houston Fancher
2004-05	18	12	9 7	2nd, tie, North Houston Fancher
2005-06	14	16	6 8	4th, North Houston Fancher
2006-07	25	8	15 3	1st, North Houston Fancher
2007-08	18	13	13 7	1st, tie, North Houston Fancher
Overall	1,083-934	276-266		

ASU in the NCAA Tournament (0-2)

3/10/79	No. 3 LSU	L	71-57	Midwest Regional
3/18/00	No. 3 Ohio State	L	87-61	South Regional

ASU in the NIT Tournament (0-1)

3/14/07	at Mississippi	L	59-73	First Round
---------	----------------	---	-------	-------------

